

**UNIQUE
MODERN
MATERIAL**

**ECONOMICALLY
BENEFICIAL
PRODUCT**

**EXTRA STRONG
AND RELIABLE**

COMPOSITE MATERIALS FACTORY

POLYEX



- 1 REINFORCEMENTS
- 2 MESH
- 3 ARCS FOR GREENHOUSES
- 4 PLANT SUPPORTS

+380507643016 Julian Kobljuk

jkobljuk@gmail.com

POLYEX.COM.UA



POLYEX

Efficiency and savings:
Composite materials that are changing the construction market

The factory is engaged in the production of high-quality composite reinforcement, mesh, and supports for plants.

The main advantage of our products is the price and quality of the product.

Each product has a certificate of conformity based on test reports.

Our customers receive a product that is resistant to alkaline environments and has high physical and mathematical properties.

For customers requiring large volumes, we can organise round-the-clock production to ensure fast order fulfilment.

AREAS OF APPLICATION OF COMPOSITE REINFORCEMENTS



Construction of multi-storey and low-rise buildings



Road construction, car parks, road and pavement slabs



Agriculture



Reinforcement of foundations and industrial floors



Reinforcement of aerated concrete blocks and as flexible ties



Offshore and coastal structures, coastal protection



Prefabricated concrete structures



Concrete products with increased load capacity

WHY CHOOSE COMPOSITE REINFORCEMENT?

1

ECONOMIC BENEFITS

Composite rebar is 50% cheaper than its metal counterpart.

2

EXTRA STRONG

2 times stronger than steel rebar grade A 400, which is confirmed by test reports.

3

LIGHTWEIGHT

The weight of composite reinforcement is 9 times lighter than its metal counterpart.

4

ANTI-CORROSION

Unlike metal reinforcement, composite reinforcement does not corrode, rot or cause concrete destruction.

5

HEAT-RESISTANT

Regardless of the temperature regime, composite reinforcement does not lose its own technical characteristics. It can withstand temperatures from -70 to +100 degrees Celsius.

6

DIELECTRIC

Our product is distinguished by its insulating properties. The fittings do not conduct electricity and do not accumulate static energy.

7

ECOLOGICAL

The fittings are made of natural components and have a service life of at least 80 years. If the installation rules are followed, they are durable and reliable.

COMPOSITE MESH

the latest solution for reinforcing of concrete structures and walls.

Its light weight simplifies transportation and installation, and its excellent technical characteristics ensure the durability and stability of structures in any conditions.

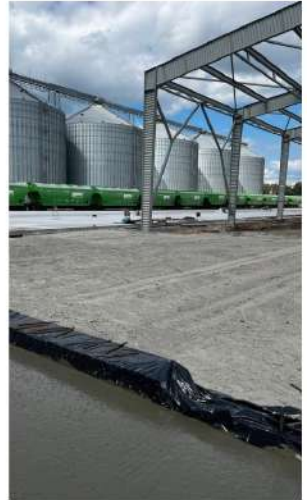
It is a reliable and efficient solution for the construction of both large infrastructure projects and small domestic structures.



- ✔ Costs 2 times less than steel, but has the same functionality
- ✔ Low thermal conductivity
- ✔ 2-2.5 times stronger than its metal analogue
- ✔ Absolute chemical resistance (anti-corrosion) to typical conditions

HOW TO SAVE MONEY USING COMPOSITE REINFORCEMENT?

OBJECT – logistics centre



TASK

To reinforce the foundation

SOLUTION

We used 10 mm composite reinforcement in 600,000 running metres instead of 14 mm steel.

COST COMPARISON

METAL	COMPOSITE
600 000 rm * UAH 36.3 = UAH 21 780 000	10 mm 600 000 rm * UAH 17.7 = UAH 10 620 000 (the price is indicated with free delivery to the object)

**SAVING OF
UAH 11 160 000**



Scan the QR code and get detailed information about the composite reinforcement of our production



EXAMPLES OF USING COMPOSITE PRODUCTS



TASK:
TO REPLACE 12 000 M/P OF METAL REINFORCEMENT OF 14 MM DIAMETER.
BUDGET: 436 000 UAH.

SOLUTION:
10 MM DIAMETER COMPOSITE REINFORCEMENT WAS USED.
THE BUDGET WAS UAH 213,240.

BENEFITS: THE SAVINGS AMOUNTED TO 222,760 UAH.



TASK:
TO REPLACE 600 000 M/P OF METAL REINFORCEMENT OF 14 MM DIAMETER,
BUDGET: 21 780 000 UAH.

SOLUTION:
COMPOSITE REINFORCEMENT WITH A DIAMETER OF 10 MM WAS USED.
BUDGET: 10,620,000 UAH.

BENEFITS: THE SAVINGS AMOUNTED TO 11,160,000 UAH.



TASK:
REPLACE 1,200,000 M/P OF METAL REINFORCEMENT OF 14 MM DIAMETER,
BUDGET: 43,560,000 UAH.

SOLUTION:
COMPOSITE REINFORCEMENT WITH A DIAMETER OF 10 MM WAS USED.
BUDGET: 21,324,000 UAH.

BENEFITS: THE SAVINGS AMOUNTED TO 22 236 000 UAH.



TASK:
REPLACE 30,000 M/P OF METAL REINFORCEMENT OF 12 MM DIAMETER,
BUDGET: 814,500 UAH.

SOLUTIONS:
COMPOSITE REINFORCEMENT WITH A DIAMETER OF 10 MM WAS USED.
BUDGET: 374 400 UAH.

BENEFITS: THE SAVINGS AMOUNTED TO 440 100 UAH.

EXAMPLES OF USING COMPOSITE PRODUCTS



TASK:
REPLACE 45,000 M/N OF METAL ARMATURE WITH A DIAMETER OF 12 MM,
BUDGET: 1,221,750 UAH.

SOLUTION:
A COMPOSITE ARMATURE WITH A DIAMETER OF 8 MM WAS USED.
BUDGET: 561,600 UAH.

PROFIT: THE SAVINGS AMOUNTED TO 660,150 UAH.



TASK:
REPLACE 8,000 M/N OF METAL ARMATURE WITH A DIAMETER OF 14 MM,
BUDGET: 290,400 UAH.

SOLUTION:
A COMPOSITE ARMATURE WITH A DIAMETER OF 10 MM WAS USED.
BUDGET: 142,160 UAH.

PROFIT: SAVINGS AMOUNTED TO 148,240 UAH.



TASK:
REPLACE 3,000 M/N OF METAL ARMATURE WITH A DIAMETER OF 16 MM,
BUDGET: 147,600 UAH.

SOLUTION:
A COMPOSITE ARMATURE WITH A DIAMETER OF 12 MM WAS USED.
BUDGET: 69,780 UAH.

PROFIT: SAVINGS AMOUNTED TO 77,850 UAH.



TASK:
REPLACE 25,000 M/N OF METAL ARMATURE WITH A DIAMETER OF 14 MM,
BUDGET: UAH 907,500.

SOLUTION:
A COMPOSITE ARMATURE WITH A DIAMETER OF 10 MM WAS USED.
BUDGET: 444,250 UAH.

PROFIT: SAVINGS AMOUNTED TO 463,250 UAH.

ARCS FOR GREENHOUSES

DOES NOT TEAR THE FILM

Unique reduced rib design that extends the life of the film.

DURABLE

Thanks to their composition, the supports are resistant to rot and corrosion. They can serve for 80 years or even longer if used properly.

EASY TO USE

Thanks to their light weight, they are easy to handle. They have a high degree of flexibility.

EASY TO STORE

After use, the greenhouse arcs straighten into straight rods. They take up little space.



PLANT SUPPORTS

EXTRA STRONG

Thanks to their unique composition, our supports are very light and strong. The service life is at least 50 years.

FLEXIBLE

Our supports are very versatile. You can use them as a support for plants or make them into an arched structure because they are flexible.

SAFE

We make our poles from environmentally friendly materials, which is confirmed by quality certificates. It is also worth noting that our products have a special double rib that increases the rigidity of the support.





POLY **EX**

COMPOSITE MATERIALS FACTORY

