

Innovative PMI – Benefit Company
ONE HEALTH Company

We are an Innovative and Benefit Company formed by professionals with experience in the fields of industrial automation, production engineering and reconditioning. Through the recovery and reuse of qualitatively non-compliant product batches, we help our customers improve their production processes and recover economy by eliminating waste, increasing energy savings and significantly improving eco-sustainability and environmental impact.

PROCESS SERVICE SRL WAS BORN TO RESPOND TO A NEED NOW COMMON TO VARIOUS INDUSTRIES PRODUCING “LARGE SERIES” OF PLASTIC PRODUCTS: THE NEED TO RECOVER BATCHES OF PRODUCTS CONTAMINATED BY QUALITATIVELY NON-COMPLIANT ELEMENTS, OTHERWISE DESTINED (ENTIRE BATCH) TO WASTE AND SUBSEQUENT RE-PRODUCTION.

PRODUCTION (CLIENT COMPANY)

This problem occurs regularly, even though the automatic machines are always checked and managed by the internal QUALITY service



PROBLEM: DEFECTIVE PRODUCT BATCH

To overcome these problems,
Process Service intervenes. Our
Company acts as an “innovative”
problem solver for to make the
product marketable again and at
the same time
ENVIRONMENTALLY
SUSTAINABLE.



SHIPPING to our company

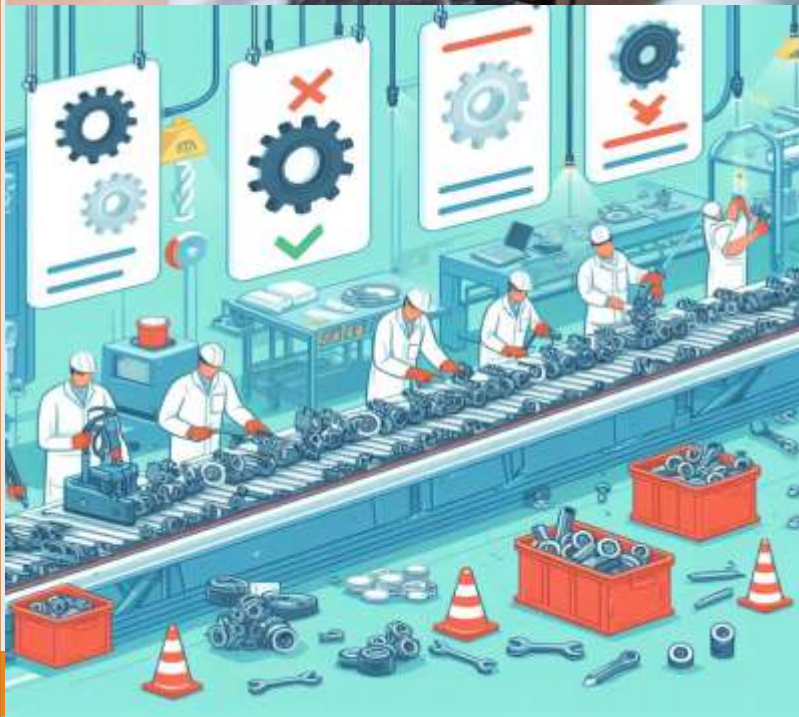


Problem
All industrial production
systematically generates
defective product
batches destined for
landfill.

selection, repair, recovery

Solution

Our solution, simple and effective, the non-compliant batch is analyzed and case by case and time we intervene on the problem that generated the NON-conformity, once the problem has been identified the re-conditioning (or "repair") of the batch is carried out.





pre-delivery check



In addition to the recovery of time and costs for the Company, we therefore have advantages for the Community and the Environment

repaired LOC and returned



The reconditioned and recovered product batch becomes usable again for reuse, finally the return to the owner company takes place to complete the production and/or distribution process.



PROBLEM



NON-CONFORMING LOTS

In all industrial production there are defective product batches destined for the garbage

DAMAGE TO THE VALUE CHAIN

Non-compliant productions create damage to the value chain by blocking the production and distribution of products, generating delays in deliveries and possible penalties to be paid to customers.

PRODUCTION BLOCK

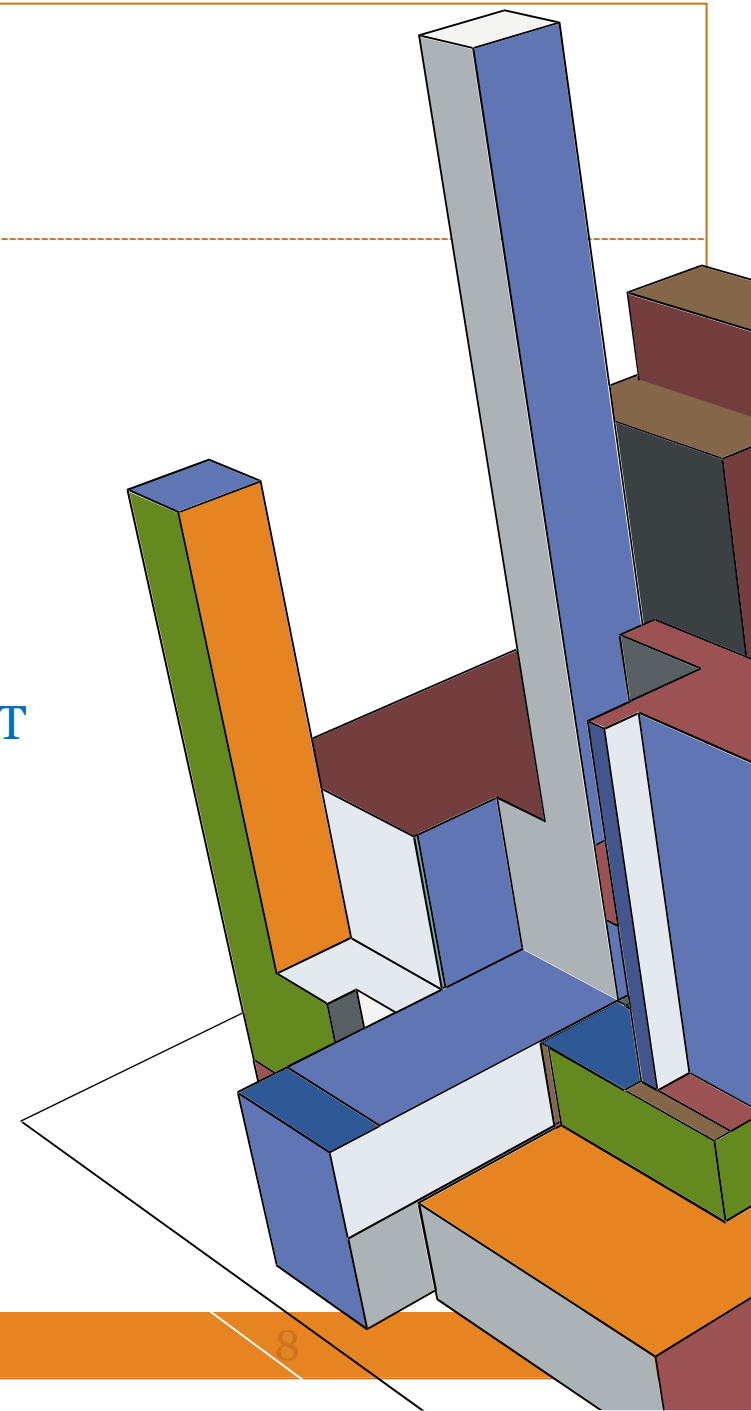
The block causes problems of reprogramming of production with waste of materials and energy for the reproduction, disposal costs and creates a disaster from the organizational and administrative point of view.

INCREASING COSTS

Lost sales due to not delivering products on time, payment of penalties, lost industrial and raw material costs, additional energy costs for re-production

DAMAGE TO THE ENVIRONMENT

The non-compliant product must be disposed of in landfill and re-produced with related new CO₂ emissions





SOLUTION

BRIDGING THE GAP

Directly from the experience of building highly automated industrial plants, we have seen that the methodologies applied by these industries for “just in time” production would cause frequent and enormous batches of rejected product.

COST SAVING

Our simple and effective solution was to directly insert into the production cycle the possibility of intervening in these increasingly frequent cases with teams of “creative” people specialized in the reconditioning and recovery of qualitatively NON-compliant product batches etc. Our team takes charge of the batch now destined for waste and reproduction and “REPAIRS” it through the ad hoc creation of both manual and dedicated equipment processes.

OVERVIEW OF RESULTS



SAVING RAW MATERIALS AND ENVIRONMENTAL RESOURCES OF THE PLANET

Contributing significantly to the protection of the environment and the creation of new dedicated and eco-sustainable jobs.

A SUPPORT CENTER IN EVERY INDUSTRIAL DISTRICT

To increase the efficiency of manufacturing factories and minimize environmental impact and waste of energy and materials.

LESS WASTE AND LESS CO₂

Hundreds of thousands of Kg of CO₂ for the re-production of batches and millions of tons of industrial waste disposal saved

INNOVATION & SUSTENIBILITY

A philosophy of thoughts and actions aimed at global sustainability. The environment and the community thank you!



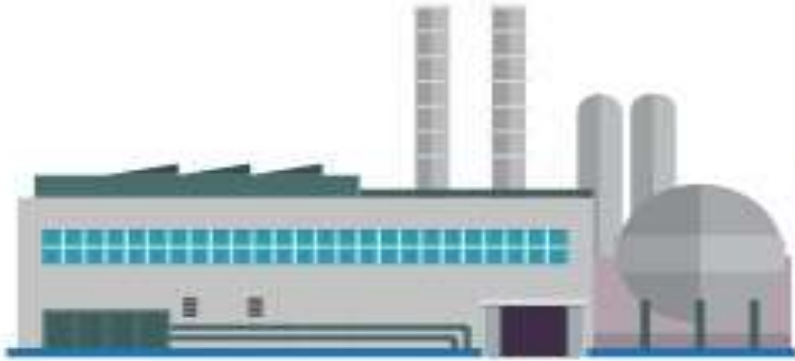
Towards global eco-sustainability



Our proposal:

- Scalability/expansion includes 2 partial objectives and one final one: the creation of an AI-assisted digital platform aimed at informing, training and "matching" supply and demand; the creation and/or affiliation of "nearby" structures (in the order of about 150 km) of the main industrial districts, expanding the activity also to the grinding and recovery of materials, to the creation of prototypes and pre-series of products with the aid of 3D printers. The final objective is to make the insertion of the process structural within large-scale industrial production, contributing to the economic and energy savings of companies, to the saving of emissions and disposal for the benefit of the Environment and the Community, all in a complementary and structural ESG perspective.

CIRCULAR ECONOMY REVERSE CYCLE



our work:
Benefits for the environment and the community