





Milla Automotive was founded in 2014 with the aim of being a preferred company in the sector with Engineering and Mold Production. Milla Automotive is a partner of Family group with Milla Yapı and Milla Bölme.

MILE STONES of PLASTIC PART PRODUCTION

- 2014 Milla Otomotiv was founded Starting with Engineering and Mold Manufacturing with an area 100 m² workshop
- 2017 Moved new workshop with an area 800 m². Bought two 120 T plastic injection machines and started plastic part production
- 2018 Workshop area became 1.750 m² by adding next and cross workshops. Added new 320 T injection machine.
- 2019 Bought 3 Engel injection machines with two 500 T and 700 T
- 2024 Will be moved new plant with an area 4.250 m² in Nilüfer Industrial Zone

ORGANISATION



- White-collar employee 13
- Blue-collar workers 28
- Total 1750 m²





Certificate of Registration

This certificate has been awarded to

MİLLA OTOMOTİV KALIP ÜRETİM SAN. VE TİCARET A.Ş.

Çalı Yolu Üçevler Mh. Akva Sanayi Sitesi 80. Blok No.2-E Nilüfer BURSA, Turkey

in recognition of the organization's Quality Management System which complies with

IATF 16949:2016

The scope of activities covered by this certificate is defined below

**Design and Manufacture of Plastic Injected Parts
- [USI TGMFE4]**

Certificate Number: 205057/AA/0001/SM/En

A certificate number of 205057, with the Client's logo and the URS logo, is placed on the Certificate. The Client's logo is placed on the Certificate. The Client's logo is placed on the Certificate. The Client's logo is placed on the Certificate.

Date of Issue of Certification Cycle	Issue Number	Certificate Expiry Date	Certification Cycle
20 July 2023	2	19 July 2026	2
Revision Date	Revision Number	Original Certificate Issue Date	Scheme Number
20 July 2023	0	26 August 2020	0479199

For detailed explanation for the data fields above, refer to <http://www.urs-holdings.com/logos-and-regulations>

Issued by



Mukesh Singhal - On behalf of the Schemes Manager



Certificate of Registration

This certificate has been awarded to

MİLLA OTOMOTİV KALIP ÜRETİM SAN. VE TİCARET A.Ş.

Çalı Yolu Üçevler Mh. Akva Sanayi Sitesi 80. Blok No.2-E Nilüfer BURSA, Turkey

in recognition of the organization's Quality Management System which complies with

ISO 9001:2015

The scope of activities covered by this certificate is defined below

**Design and Manufacture of Plastic Injected Parts
- [USI TGMFE4]**

Certificate Number: 205057/AA/0001/SM/En

A certificate number of 205057, with the Client's logo and the URS logo, is placed on the Certificate. The Client's logo is placed on the Certificate. The Client's logo is placed on the Certificate. The Client's logo is placed on the Certificate.

Date of Issue of Certification Cycle	Issue Number	Certificate Expiry Date	Certification Cycle
20 July 2023	2	19 July 2026	2
Revision Date	Revision Number	Original Certificate Issue Date	Scheme Number
20 July 2023	0	26 August 2020	

For detailed explanation for the data fields above, refer to <http://www.urs-holdings.com/logos-and-regulations>

Issued by



Mukesh Singhal - On behalf of the Schemes Manager

If there is any doubt as to the authenticity of this certificate, please do not hesitate to contact the Head Office of the Group at info@urs-certification.com. URS is a member of United Register of Systems (URS), United States, 20 Trade Hill, Birmingham B15 2JY, UK. Company Registration No. 1049848.

MAIN ACTIVITIES

- Product development
- CO-design
- Mold design
- Prototype molds (Soft tool)
- Plastic injection molds
- SMC molds
- Control fixture
- Special machining
- Production of plastic injection parts

Our company, which is established with the understanding of contemporary project management, offers all engineering and production services from design phase to mass production.

MOLDSHOP MACHINES

CNC MACHINING CENTER

Hermle C650 5 EKSEN
Hermle C400 5 EKSEN
Hermle B300 5 EKSEN
Us Wheeler DT600A
Us Wheeler EM870A
Haas VF2
Haas VF3
Haas VM6
Avea BM1600
YCM NDC2016B
Nicolas Correa cf 2200

EDM MACHINES

Sodich AQ 1200 L WIRE EDM
Makino EDNC 43 EDM
Oscarmax S 550 NC EDM
Oscarmax S 645 NC EDM

CONVENTIONAL MACHINES

Phoebus Milling machine
Elar Excellent ZNC 540 EDM
KO-WAY Lathe Machine
ELB-Grinding (600x400)
ELB-Grinding (1200x700)
Radial Drill
Tapping Machine

CRANE CAPACITY

Güralp 20 ton
Güralp 3 ton
Güralp 3,2 ton



SOFTWARE and EQUIPMENTS

CAD/CAM SOFTWARE

Unigraphics NX CAD/CAM 3Axis milling 2 seats

Unigraphics NX Daimler supplier 2 seats

Unigraphics NX Viewer 1 seat

Catia V5 R20 2015 1 seat

HyperMILL 7M-5Axis 1 seat

HyperMILL Expert 3 seats

Alibre Design Professional V26

WORKSHOP EQUIPMENT

BILZ Heavy Weight Champion ISG4410WK-HL

ELBO CONTROLLI – NIKKEN

MOLD SPOTTING PRESS

TCS Provastampı 50 Ton 1500x1100



MOLDING ROOM CAPACITY

PLASTIC INJECTION WORKBENCHS

CHENDE EM120-V

CHENDE EM120-V

BORCE BS 320 III

ENGEL ES 700

ENGEL ES 500

ENGEL ES 500

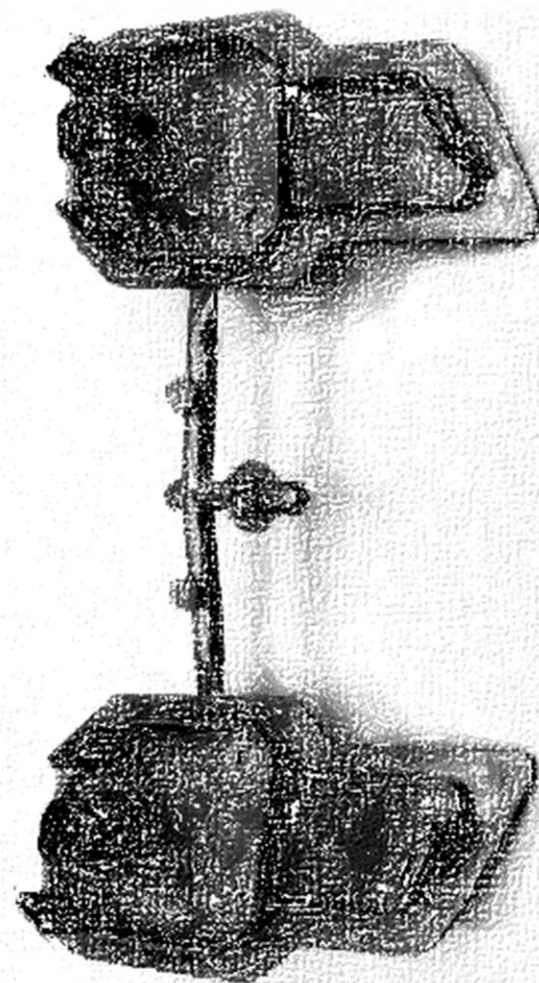
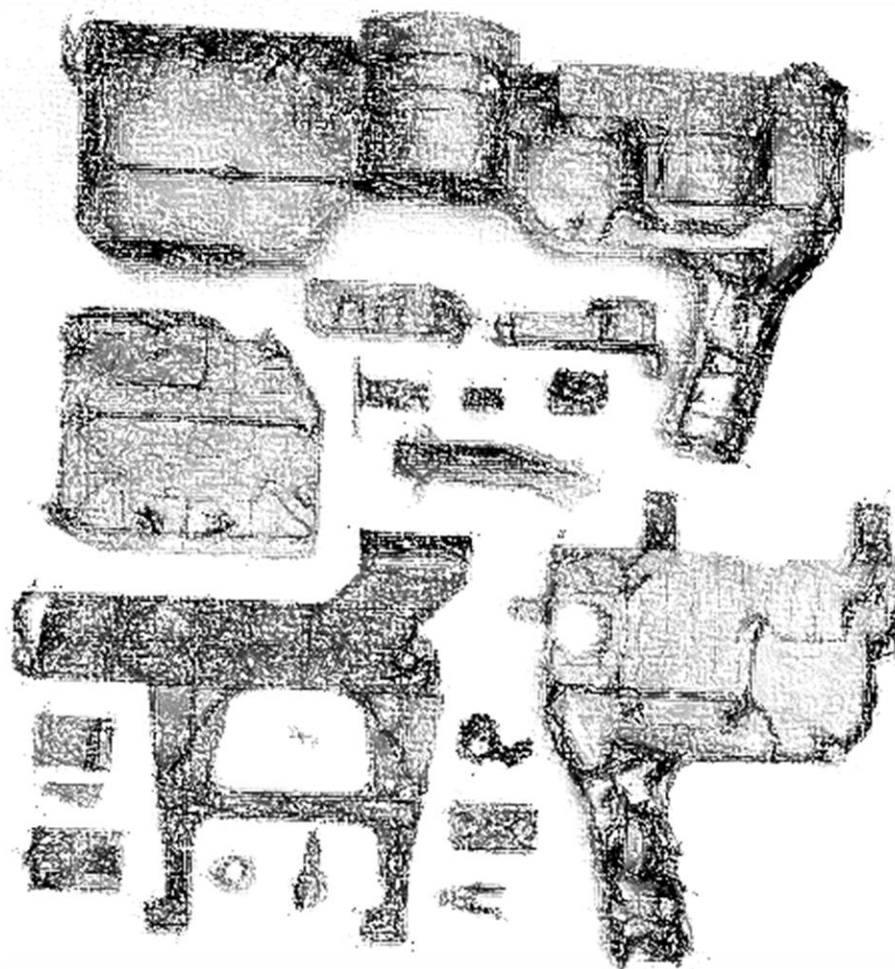
CHILLER

FRİGO GR1AC-100K kcal

ÜÇSAN Cooling Tower 90.5K kcal



SAMPLE DEFENSE INDUSTRY PROJECTS



OTOMOTİV®

KALIP ÜRETİM SAN. ve TİC. A.Ş.

SAMPLE PROJECTS



OTOMOTİV®

KALIP ÜRETİM SAN. ve TİC. A.Ş.

SAMPLE PROJECTS



SAMPLE PROJECTS

- Volkswagen I.D. Buzz



- Fiat egea cross



ALUMINIUM INJECTION PROJECTS



BLOW MOLDING PROJECTS SAMPLES



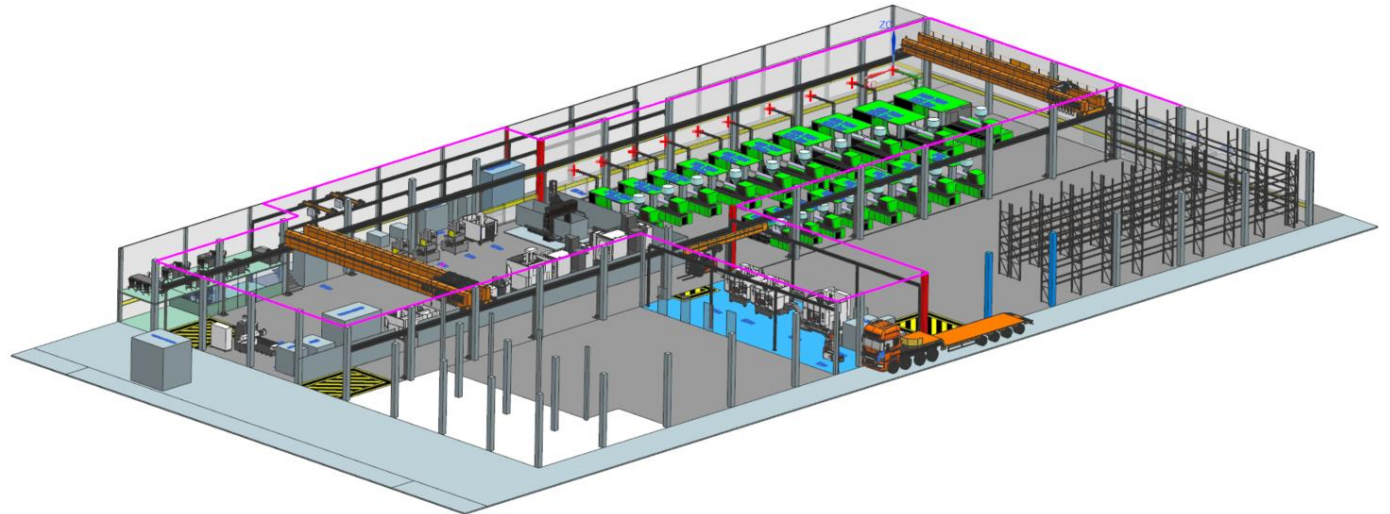
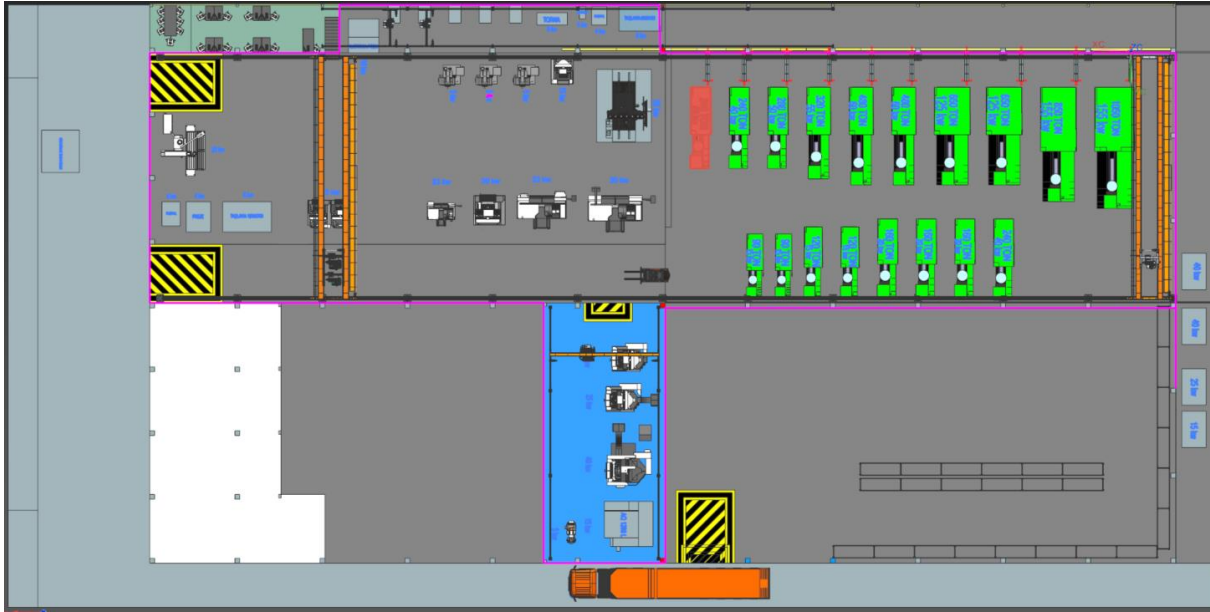
SHEET METAL PROJECTS SAMPLES



SAMPLE OF INJECTION PRODUCTS WITH PIANO BLACK PAINTING



NEW FACTORY LOCATION is in INDUSTRIAL ZONE



MAIN REFERENCES



Mercedes-Benz



TOFAŞ TÜRK OTOMOBİL FABRİKASI A.Ş.

